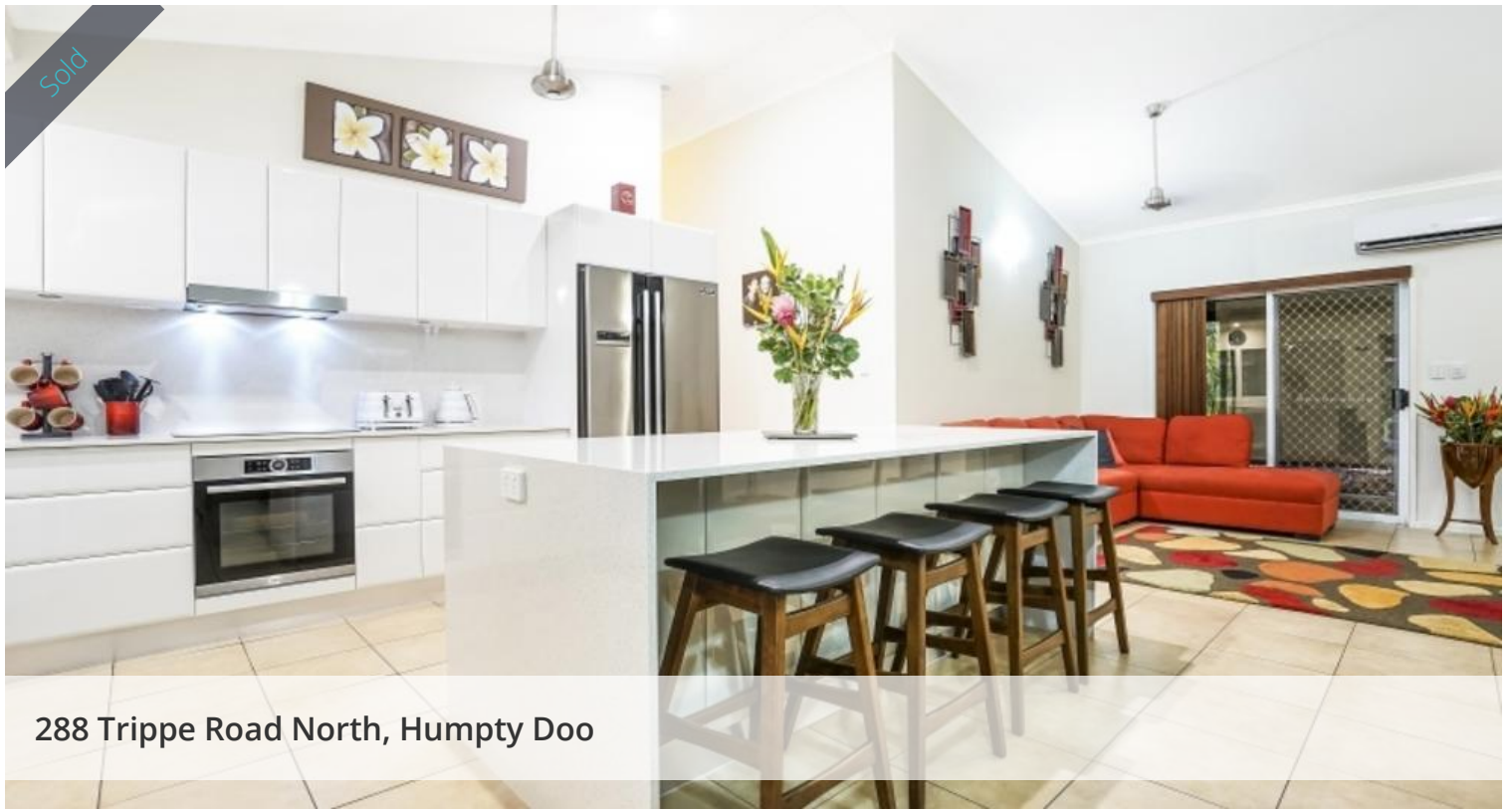


Sold



288 Trippe Road North, Humpty Doo



## TRIPPE RD NORTH -- Tranquil acreage will impress with stylish modern living

Expansive rolling lawns and beautifully manicured gardens create a stunning park-like setting for this quality family home that's set on a beautiful 2.2-hectre property. The spacious five-bedroom main house joins a fully self-contained one-bedroom demountable, and you'll easily host all your friends on the enormous poolside alfresco patio with bar, barbeque and pool table.

- Spacious open-plan living/dining area with impressive pitched ceilings
- Premium new kitchen with SMEG appliances plus Bosch self-cleaning oven
- Five generous bedrooms in the main house all feature built-in robes
- Self-contained one-bedroom demountable with kitchen and ensuite
- Enormous entertainer's patio includes bar, barbeque and pool table
- TV, sound bar and outdoor dining setting can be included by negotiation
- Resort-style saltwater pool with rock waterfall and three shade sails
- Reticulated gardens; plentiful bore water supply; septic drain system
- Three-phase power; solar hot water; NBN connected; a/c throughout
- Huge triple carport plus double lock-up garage accommodate five cars
- Termite protected by termite guard pumping station
- Remote controlled front gate

🛏 5 🌐 2 🚗 5 🏠

<b>Price</b>	SOLD
<b>Property Type</b>	residential
<b>Property ID</b>	165
<b>Land Area</b>	2.20 ha

### Agent Details

Nikki Vazanellis - 0450 473 710

### Office Details

Core Realty (NT)  
Unit 304 42 Gothenburg Crescent  
Stuart Park NT 0820 Australia  
0450 473 710



*The above information provided has been furnished to us by the vendor/s. We have not verified whether or not that information is accurate and do not have any belief in one way or the other in its accuracy. We do not accept any responsibility to any person for its accuracy and do no more than pass it on. All interested parties should make and rely upon their own inquiries in order to determine whether or not this information is in fact accurate.*